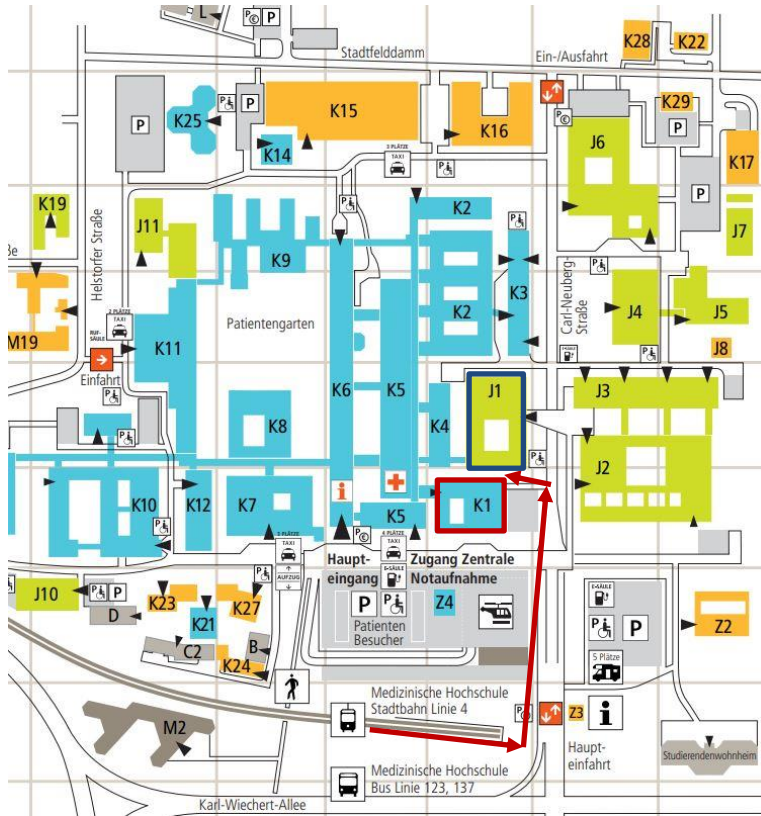


Research Ethics & Methodology Working Group



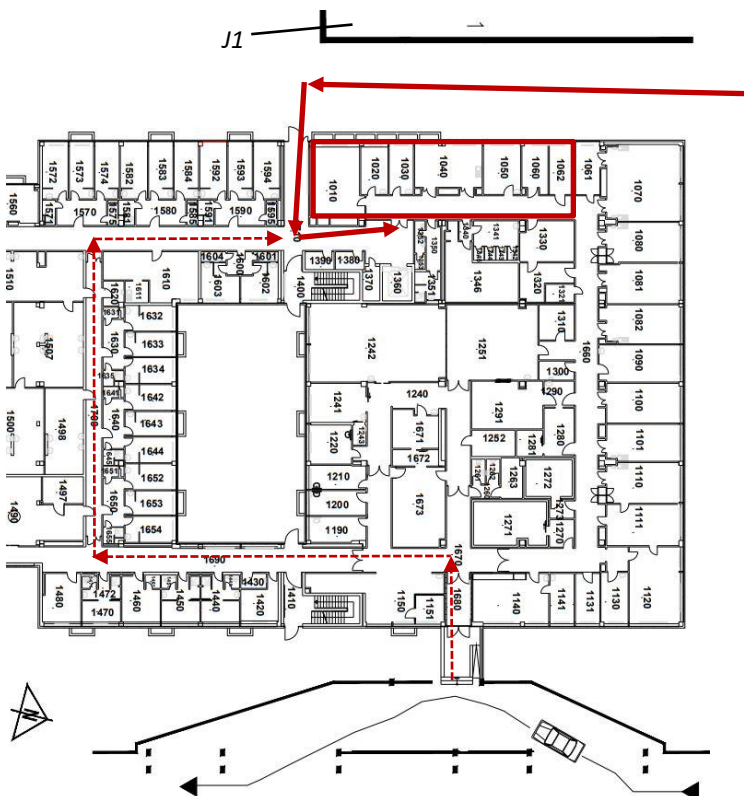
The Research Ethics Group is **not** located at the main site of the Institute for Ethics, History and Philosophy of Medicine, in building J1.

The rooms of the working group are located at the **second location** of the Institute, in building **K1**.

When arriving by streetcar (line U4) from the station Medizinische Hochschule, walk in the direction of Carl-Neuberg-Straße (see “main entrance” to the MHH on the map on the left).

Then follow Carl-Neuberg-Straße on the left-hand side (on the map) until you reach the entrance between buildings **K1**

and **J1**. The closest entrance to **K1** for the second location of the institute is opposite building J1 in this driveway.



Carl-Neuberg-Straße

The rooms **outlined in red** on the plan of **K1** (left) belong to the second location of the Institute, where the Research Ethics Working Group is also located. The head of the working group is located in room 1020.

An alternative route to the rooms **(red dotted arrows)** is via the main entrance of **K1** (in plan 1680, below). Follow the bypass corridor on the **left** - the path on the right (Institute of Biometry) is secured and therefore not passable!

Arrival

By Deutsche Bahn (DB)

Take **S-Bahn S3** from Hannover Hbf to Hildesheim or **S6 / S7** to Celle. Change at Karl-Wiechert-Allee to U4 (direction Roderbruch). Exit at Medizinische Hochschule.

By Streetcar (üstra)

Line U4 (from Garbsen in the direction of Roderbruch; exit: Medizinische Hochschule
ATTENTION: Line 4 does not run directly from the main station! Either walk 400m from the main station to Kröpcke station or take the lines U1 / U2 / U8 (Messe) from the main station underground level two stations to Aegidientorplatz, then change to line U4 on the same platform level opposite.)

By Car

Address for the **navigation system**: Carl-Neuberg-Straße 1, 30625 Hannover. Paid parking lots of the MHH can be used (see map above).

Coming from **Kassel**, take the A7 to the Hannover-Süd interchange and continue on the A37 towards Hannover. The A37 merges into the Messeschnellweg.

From **Hamburg** on the A7 to the Hannover-Kirchhorst interchange, continue on the A37 towards Hannover.

From **Dortmund or Berlin** on the A2 to the Hannover-Buchholz interchange, continue on the A37 towards Hannover.

Take the A37 or the Messeschnellweg to the Weideter traffic circle and turn into Karl-Wiechert-Allee (see map above). Then it is only a few minutes to the MHH